

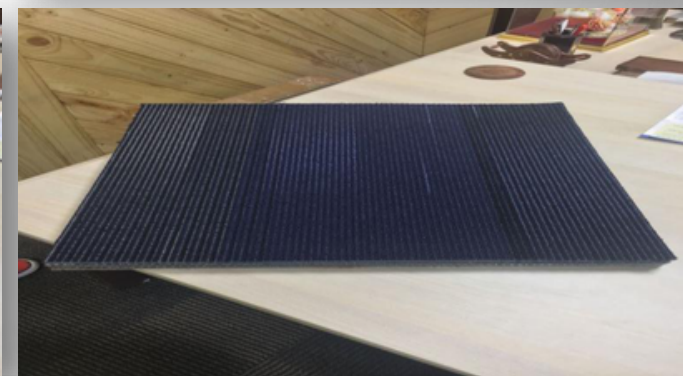
ADVANTAGES OF CARPET TILES

Today's modern office environments with open office systems are designed for flexibility to accommodate frequent layout changes. A modular floor can be quickly adapted to new requirements thereby reducing the cost of reorganisation. Where carpet tiles are installed, telephone, electrical and other under floor systems remain easily accessible for these changes to be made.

- Color coordinated for maximum design flexibility.
- Increased speed of installation.
- Installation wastage is reduced.
- Damaged or soiled tiles can be replaced.
- Wear rotation to extend flooring lifespan.
- Renovation with minimal disruption.
- Compatibility with access systems.

With all this flexibility, we're sure that whatever the specification, whatever the budget, you'll find exactly what you need in our carpet tile portfolio.

SERIES NAME	FINELINE
YARN	100% PP (Miracle Fibre)
CONSTRUCTION	Multi Level Loop
GAUGE	1/12"
STITCHES	10 per inch
PILE WEIGHT	21oz/sq.yd
AVERAGE PILE HEIGHT	4mm(±0.5mm)
BACKING	PVC reinforced with fiberglass
TILE SIZE	50cm X 50cm
AREA / BOX	5 sq.mtr or 53.82 sq.ft
PIECES / BOX	20 pieces
STATIC PROPENSITY	<3.5kV (AATCC-134)
FLAMMABILITY	Passes (ASTM E648)
SMOKE DENSITY	Passes (ASTM E662)

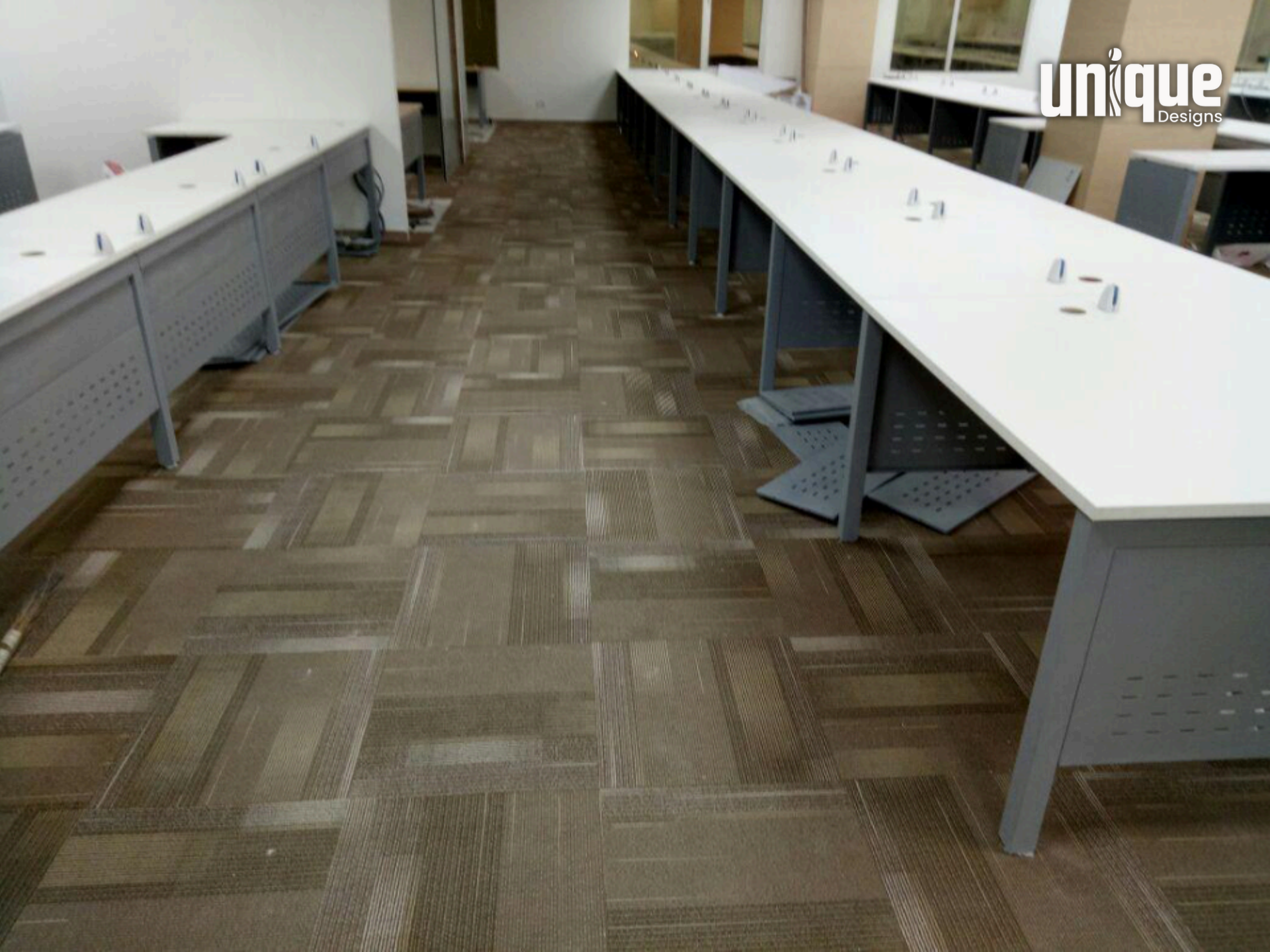


unique
Designs



unique
Designs













unique
Designs

unique
Designs



unique
Designs

